



## Census 2011: Key and Quick Statistics

[Metadata](#) 

### Overview of the Census



## Who we are. How we live. What we do.

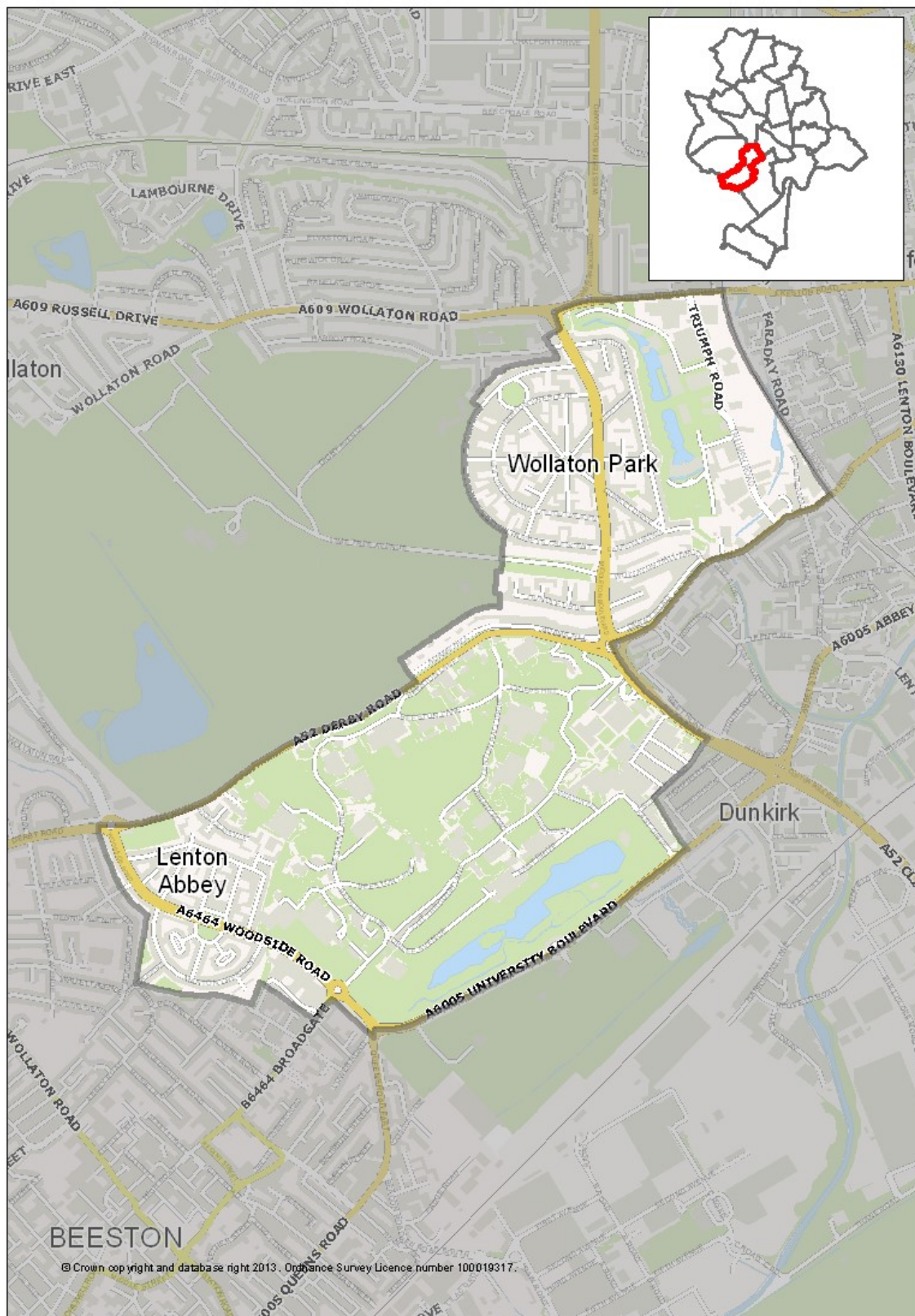
The latest census was undertaken 27 March 2011. The first census in England and Wales was carried out in 1801 and has taken place every ten years (with the exception of 1941, during the second world war.) The census is not only a population count, but provides a wealth of information about our characteristics: how we live, who we are and how we work.

The census results help government and local authorities to plan and run public services and identify the resources people need. Key areas include : housing; health care; transport and education. The census is used by central government for funding allocation. Please note that Nottinghamshire includes all the districts but excludes Nottingham City. The Office for the National Statistics plans and carries out the Census. Please include the following Copyright@ons.gov.uk when referencing the Census 2011 data.

Please note this profile contains only Census data, other data is available on Nottingham Insight from the [profile library](#) or the [data library](#).

[^ top ^](#)

### Map of Wollaton East and Lenton Abbey



[^ top ^](#)

## Census Population

## Total population, household population and male and female population.

Table: Census 2011 population summary					
	Wollaton East and Lenton Abbey	Nottingham	Nottinghamshire	East Midlands	England
All people (2011)	9,952	305,680	785,802	4,533,222	53,012,456
Percentage change from 2001	N/A	N/A	N/A	N/A	N/A
Household residents (census) (2011)	5,038	289,738	774,338	4,442,192	52,059,931
All Males (2011)	4,995	153,777	386,722	2,234,493	26,069,148
Percentage change from 2001	N/A	N/A	N/A	N/A	N/A
All Females (2011)	4,957	151,903	399,080	2,298,729	26,943,308
Percentage change from 2001	N/A	N/A	N/A	N/A	N/A

Source: ONS, Census 2011

### Population density:

Population density is the number of usual residents per hectare. A hectare is the metric unit of area defined as 10,000 square metres or approximately 2.47 acres.

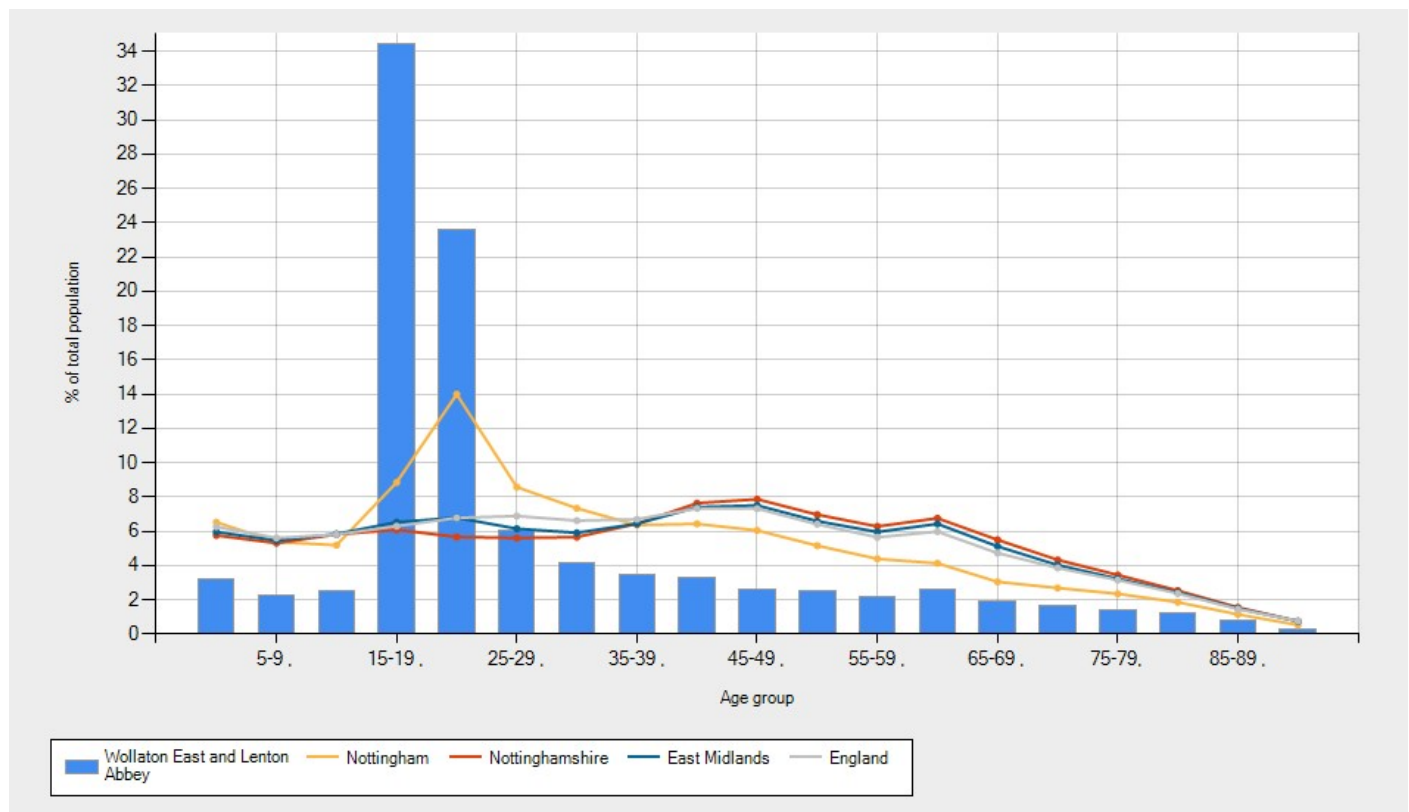
Table: Census 2011 population density					
	Wollaton East and Lenton Abbey	Nottingham	Nottinghamshire	East Midlands	England
Density (number of persons per hectare) (Ratio) (2011)	34.6	41	3.8	2.9	4.1

Source: ONS, Census 2011

Chart: Age profile:

The chart below shows a breakdown by 5 year age band.

Source: ONS, 2011 Census



Marital and civil partnership

Number of all people aged 16 or over.

Table: Census 2011 Marital and Civil Partnership					
	Wollaton East and Lenton Abbey	Nottingham	Nottinghamshire	East Midlands	England
Total number of people aged 16 and over	9,116	250,104	643,480	3,694,767	42,989,620

Source: ONS, Census 2011

Marital and civil partnership

Marital and civil partnership status classifies an individual according to their legal marital or registered same-sex civil partnership status as at census day, 27 March 2011. Data is shown as a percentage of all people aged 16 or over. (Numbers are shown in brackets).

Table: Census 2011 Marital and Civil Partnership					
	Wollaton East and Lenton Abbey	Nottingham	Nottinghamshire	East Midlands	England
Single (never married or never registered a same-sex civil partnership)	75.7 (6,903)	51.3	29.9	32.3	34.6
Married	16.7 (1,521)	31.6	50.2	48.5	46.6
In a registered same-sex civil partnership	0.1 (9)	0.2	0.2	0.2	0.2
Separated (but still legally married or still legally in a same-sex civil partnership)	1.1 (98)	2.8	2.5	2.6	2.7
Divorced or formerly in a same-sex civil partnership which is now legally dissolved	3.6 (332)	8.3	9.6	9.3	9.0
Widowed or surviving partner from a same-sex civil partnership	2.8 (253)	5.7	7.5	7.2	6.9

Source: ONS, Census 2011

Ethnic group

Ethnic group classifies people according to their own perceived ethnic group and cultural background. Data is shown as a percentage of the population. (Numbers are shown in brackets).

Table: Census 2011 Ethnic Group					
	Wollaton East and Lenton Abbey	Nottingham	Nottinghamshire	East Midlands	England
White: British	60.2 (5,994)	65.4	92.6	N/A	79.8
White: non British	7.2 (718)	6.1	2.9	N/A	5.7
Mixed/multiple ethnic groups	4.5 (444)	6.6	1.4	N/A	2.3
Asian/Asian British	21.3 (2,123)	13.1	2.2	N/A	7.8
Black/African/Caribbean/Black British	4.5 (452)	7.3	0.7	N/A	3.5
Other ethnic group	2.2 (221)	1.5	0.3	N/A	1.0
Black Minority Ethnic	39.8 (3,958)	34.6	7.4	N/A	20.3

Source: ONS, Census 2011

## Religion

The question on religious affiliation in the census was introduced in 2001 and is voluntary. Data is shown as percentage of the population. (Numbers are shown in brackets).

Table: Census 2011 Religion					
	Wollaton East and Lenton Abbey	Nottingham	Nottinghamshire	East Midlands	England
Christian	38.7 (3,853)	44.2	61.3	58.8	59.4
Buddhist	2.1 (209)	0.7	0.2	0.3	0.5
Hindu	3.5 (351)	1.5	0.4	2.0	1.5
Jewish	1.6 (160)	0.4	0.1	0.1	0.5
Muslim	7.7 (761)	8.8	0.9	3.1	5.0
Sikh	1.4 (142)	1.4	0.4	1.0	0.8
Other religion	0.6 (64)	0.5	0.3	0.4	0.4
No religion	37.8 (3,757)	35.0	29.3	27.5	24.7
Religion not stated	6.6 (655)	7.6	7.0	6.8	7.2

Source: ONS, Census 2011

## Country of birth

Country of birth is the country in which a person was born. The country of birth question included six tick box responses - one for each of the four parts of the UK, one for the Republic of Ireland, and one for 'Elsewhere'. Where a person ticked 'Elsewhere', they were asked to write in the current name of the country in which they were born. Responses are assigned codes based on the National Statistics Country Classification. Data is shown as a percentage of the population. (Numbers are shown in brackets).

Table: Census 2011 Country of birth					
	Wollaton East and Lenton Abbey	Nottingham	Nottinghamshire	East Midlands	England
England	70.2 (6,990)	78.4	92.3	87.6	83.5
Northern Ireland	0.4 (37)	0.4	0.3	0.4	0.4
Scotland	1.1 (105)	1.1	1.3	1.5	1.3
Wales	0.9 (86)	0.6	0.7	0.7	1.0
United Kingdom not otherwise specified	0.0 ()	0.0	0.0	0.0	0.0
Ireland	0.3 (31)	0.6	0.4	0.5	0.8
Other EU: Member countries in March 2001	2.8 (283)	1.6	0.9	1.1	1.7
Other EU: Accession countries April 2001 to March 2011	2.1 (205)	3.2	1.4	2.0	2.1
Other countries	22.3 (2,215)	14.1	2.8	6.3	9.4

Source: ONS, Census 2011

Passports held

Results for 'Passports held' classify a person according the passport or passports that they held at the time of the 2011 Census. People were asked to indicate whether they held no passport, a United Kingdom passport, an Irish passport, or a passport from another country, and write in the name of the other country if applicable. If more than one of the options were applicable people were asked to indicate all that applied.

In results that classify people by passports held, those who hold a United Kingdom or Irish passport, and any other type of passport, will appear in each applicable category.

The categories 'EU countries' and 'non-EU countries' relate to the European Union (EU) as at March 2011. Data is shown as a percentage of the whole population, but, as people can hold more than one passport, the totals may exceed 100% (Numbers are shown in brackets).

Table: Census 2011 Passports held					
	Wollaton East and Lenton Abbey	Nottingham	Nottinghamshire	East Midlands	England
No passport	9.5 (948)	20.4	20.7	20.3	16.5
United Kingdom	69.4 (6,904)	67.7	76.3	74.4	75.8
Republic of Ireland	0.6 (61)	0.6	0.3	0.4	0.8
Other Europe: EU countries	5.2 (513)	4.7	1.7	2.8	3.6
Other Europe: Non EU countries	0.7 (72)	0.2	0.1	0.1	0.3
Africa	2.5 (245)	2.0	0.2	0.6	1.0
Middle East and Asia	11.9 (1,187)	4.4	0.6	1.4	2.1
North America and the Caribbean	1.4 (141)	0.7	0.2	0.3	0.6
Central America	0.1 (8)	0.0	0.0	0.0	0.0
South America	0.3 (25)	0.1	0.0	0.0	0.1
Antarctica and Oceania	0.4 (43)	0.2	0.1	0.2	0.4
British Overseas Territories	0.0 (3)	0.0	0.0	0.0	0.0

Source: ONS, Census 2011

Household language

The 2011 Census collected information for the first time on main language and English language skills. Data shown a percentage of no of households. (Numbers are shown in brackets).

Table: Census 2011 Household language					
	Wollaton East and Lenton Abbey	Nottingham	Nottinghamshire	East Midlands	England
All people aged 16 and over in household have English as a main language	79.9 (1,735)	85.6	96.8	93.3	90.9
At least one but not all people aged 16 and over in household have English as a main language	7.4 (161)	5.6	1.5	2.6	3.9
No people aged 16 and over in household but at least one person aged 3 to 15 has English as a main language	1.1 (24)	1.0	0.2	0.5	0.8
No people in household have English as a main language	11.6 (252)	7.8	1.6	3.6	4.4

Source: ONS, Census 2011

[^ top ^](#)

Census Household

Total number of dwellings

The table below shows the total number of dwellings.

Table: Census 2011 Total number of dwellings					
	Wollaton East and Lenton Abbey	Nottingham	Nottinghamshire	East Midlands	England
All dwellings	2,288	131,586	347,044	1,973,828	23,044,097

Source: ONS, Census 2011



## All dwellings/all household spaces

A household space is the accommodation used or available for use by an individual household. Household spaces are identified separately in census results as those with at least one usual resident, and those that do not have any usual residents. A household space with no usual residents may still be used by short-term residents, visitors who were present on census night, or a combination of short-term residents and visitors. Vacant household spaces and household spaces that are used as second addresses are also classified in census results as household spaces with no usual residents.

A household is defined as one person living alone, or a group of people (not necessarily related) living at the same address who share cooking facilities and share a living room or sitting room or dining area. A household must contain at least one person whose place of usual residence is at the address. A group of short-term residents living together is not classified as a household, and neither is a group of people at an address where only visitors are staying.

All data shown as a percentage of households or household spaces. (Numbers are shown in brackets).

Table: Census 2011 All dwellings/all household spaces					
	Wollaton East and Lenton Abbey	Nottingham	Nottinghamshire	East Midlands	England
Unshared dwelling	99.9 (2,281)	99.9	100.0	100.0	99.9
Shared dwelling: Two household spaces	0.0 ()	0.0	0.0	0.0	0.0
Shared dwelling: Three or more household spaces	0.1 (2)	0.1	0.0	0.0	0.1
Household spaces with at least one usual resident	94.9 (2,172)	95.9	96.3	96.0	95.7
Household spaces with no usual residents	5.1 (116)	4.2	3.7	4.0	4.3

Source: ONS, Census 2011

## Household composition

Household composition refers to the usual residents in a household and their relationship to each other.

Households may be a family or they may consist of one person living alone or unrelated adults sharing. A family is a couple (married, civil partners or cohabiting), with or without children, or a lone parent with at least one child. Children may be dependent or non-dependent. A dependent child is any person aged 0-15 in a household or any person aged 16-18 in full time education and living in a family with their parent(s) Data shown as a percentage of all households. (Numbers are shown in brackets).

Table: Census 2011 Household composition					
	Wollaton East and Lenton Abbey	Nottingham	Nottinghamshire	East Midlands	England
One person household: Aged 65 and over	13.3 (289)	10.8	12.8	12.3	12.4
One person household: Aged 64 or under	21.1 (458)	25.4	15.6	16.7	17.9
One family only: All aged 65 and over	6.2 (134)	4.8	9.7	9.0	8.1
One family only: Married or same-sex civil partnership couple: Dependent children	11.6 (252)	10.5	15.5	15.3	15.3
One family only: Married or same-sex civil partnership couple: All children non-dependent	3.0 (66)	3.8	6.1	5.7	5.6
One family only: Married or same-sex civil partnership couple: No children	9.0 (195)	8.1	14.7	14.0	12.3
One family only: Cohabiting couple: No children	4.2 (92)	5.6	5.6	5.6	5.3
One family only: Cohabiting couple: Dependent children	3.8 (83)	4.3	4.7	4.5	4.0
One family only: Cohabiting couple: All children non-dependent	0.2 (4)	0.6	0.6	0.5	0.5
One family only: Lone parent: Dependent children	7.4 (160)	9.5	6.5	6.7	7.1
One family only: Lone parent: All children non-dependent	3.3 (71)	3.5	3.2	3.2	3.5
Other household types: With dependent children	2.9 (63)	3.1	1.8	2.3	2.7
Other household types: All full-time students	7.6 (164)	3.8	0.2	0.6	0.6
Other household types: All aged 65 and over	0.3 (6)	0.2	0.2	0.3	0.3
Other household types: Other	6.2 (135)	6.1	2.9	3.5	4.5
Households of one cohabiting couple (% of all households)	8.2 (179)	10.5	10.8	10.6	9.9

Source: ONS, Census 2011



## Tenure

Tenure provides information about whether a household rents or owns the accommodation that it occupies and, if rented, combines this with information about the type of landlord who owns or manages the accommodation. Data is shown as a percentage of households. (Numbers are shown in brackets).

Table: Census 2011 Accommodation and tenure					
	Wollaton East and Lenton Abbey	Nottingham	Nottinghamshire	East Midlands	England
Owned: Owned outright	23.4 (508)	19.9	35.7	32.8	30.6
Owned: Owned with a mortgage or loan	20.1 (437)	25.1	35.9	34.5	32.8
Social rented: Rented from council (Local Authority)	22.2 (483)	20.8	9.3	10.1	9.4
Social rented: Other	6.3 (136)	9.0	4.2	5.7	8.3
Private rented: Private landlord or letting agency	20.3 (441)	21.6	11.9	13.6	15.4
Private rented: Other	4.9 (107)	1.4	1.2	1.3	1.4
Living rent free	2.4 (53)	1.5	1.3	1.3	1.3

Source: ONS, Census 2011

## Type of accommodation

The type of accommodation used or available for use by an individual household. Examples include the whole of a terraced house, or a flat in a purpose-built block of flats.

Data is shown as a percentage of households. (Numbers are shown in brackets).

Table: Census 2011 Type of accommodation					
	Wollaton East and Lenton Abbey	Nottingham	Nottinghamshire	East Midlands	England
Whole house or bungalow: Detached	18.1 (414)	14.8	35.6	32.2	22.3
Whole house or bungalow: Semi-detached	43.7 (1,000)	31.2	37.9	35.1	30.7
Whole house or bungalow: Terraced	27.0 (617)	28.6	16.6	20.6	24.5
Flat, maisonette or apartment: Purpose-built block of flats or tenement	9.4 (215)	20.4	7.6	9.3	16.7
Flat, maisonette or apartment: Part of a converted or shared house (including bed-sits)	1.2 (27)	3.8	1.2	1.6	4.3
Flat, maisonette or apartment: In a commercial building	0.7 (15)	1.2	0.8	0.9	1.1
Caravan or other mobile or temporary structure	0.0 ()	0.1	0.4	0.4	0.4

Source: ONS, Census 2011

A household's accommodation is classified as having central heating if it is present in some or all rooms (whether used or not). Central heating is classified by type, for example one or more of the types - gas, electric (including storage heaters), oil, solid fuel (for example wood or coal) or other types (including solar, Liquefied Petroleum Gas (LPG) or other bottled gas). Data is shown as a percentage of households. (Numbers are shown in brackets).

Table: Census 2011 Central heating					
	Wollaton East and Lenton Abbey	Nottingham	Nottinghamshire	East Midlands	England
Does not have central heating	2.3 (49)	2.4	1.4	2.0	2.7
Does have central heating (% of households)	97.7 (2,123)	97.6	98.6	98.0	97.3

Source: ONS, Census 2011

Occupancy rating

Occupancy rating provides a measure of whether a household's accommodation is overcrowded or under occupied. There are two measures of occupancy rating, one based on the number of rooms in a household's accommodation, and one based on the number of bedrooms. The ages of the household members and their relationships to each other are used to derive the number of rooms/bedrooms they require, based on a standard formula. The number of rooms/bedrooms required is subtracted from the number of rooms/bedrooms in the household's accommodation to obtain the occupancy rating. An occupancy rating of -1 implies that a household has one fewer room/bedroom than required, whereas +1 implies that they have one more room/bedroom than the standard requirement. (Numbers are shown in brackets).

Table: Census 2011 Occupancy rating					
	Wollaton East and Lenton Abbey	Nottingham	Nottinghamshire	East Midlands	England
Occupancy rating (rooms) of -1 or less	10.9 (236)	12.6	3.8	5.5	8.7
Occupancy rating (bedrooms) of -1 or less	6.2 (134)	6.2	2.3	3.3	4.8

Source: ONS, Census 2011

Average household size

The size of a household is equal to the number of usual residents in the household. Visitors staying at an address do not contribute to that household's size because they are counted in the household of their place of usual residence. Household size is only applicable to household spaces with at least one usual resident.

Table: Census 2011 Average household size					
	Wollaton East and Lenton Abbey	Nottingham	Nottinghamshire	East Midlands	England
Average household size	2.0	2.0	2.0	2.0	2.0
Average number of rooms per household	5.0	5.0	6.0	6.0	5.0
Average number of bedrooms per household	3.0	3.0	3.0	3.0	3.0

Source: ONS, Census 2011

The number of cars and vans available to households. Data is shown as percentage of households. (Numbers are shown in brackets).

Table: Census 2011 Car or van availability					
	Wollaton East and Lenton Abbey	Nottingham	Nottinghamshire	East Midlands	England
No cars or vans in household	43.1 (936)	43.7	20.9	22.1	25.8
1 car or van in household	40.7 (883)	40.1	43.4	42.5	42.2
2 cars or vans in household	13.1 (285)	13.3	28.1	27.4	24.7
3 cars or vans in household	2.3 (49)	2.2	5.8	6.0	5.5
4 or more cars or vans in household	0.9 (19)	0.6	1.9	2.0	1.9

Source: ONS, Census 2011

[^ top ^](#)

Census: Health and Carers

## Long-term activity-limiting illness or disability

All those reporting a long term health problem or disability (including those related to age) that limited their day-to-day activities and that had lasted, or was expected to last, at least 12 months, were asked to assess whether their daily activities were limited a lot, a little or not at all by such a health problem. Data shown as a percentage of total population and those aged 16 to 64. (Numbers are shown in brackets).

Table: Census 2011 Long-term activity-limiting illness or disability					
	Wollaton East and Lenton Abbey	Nottingham	Nottinghamshire	East Midlands	England
Day-to-day activities limited a lot (% of total population)	5.6 (556)	9.1	9.7	8.7	8.3
Day-to-day activities limited a lot (aged 16-64)	N/A (N/A)	6.7	6.4	5.7	5.6
Day-to-day activities limited a little (% of total population)	5.8 (576)	9.1	10.6	10.0	9.3
Day-to-day activities limited a little (aged 16-64)	N/A (N/A)	7.6	8.2	7.6	7.2
Day-to-day activities not limited (% of total population)	88.6 (8,820)	81.9	79.7	81.4	82.4
Day-to-day activities not limited (aged 16-64)	N/A (N/A)	85.8	85.3	86.6	87.3

Source: ONS, Census 2011

## General Health

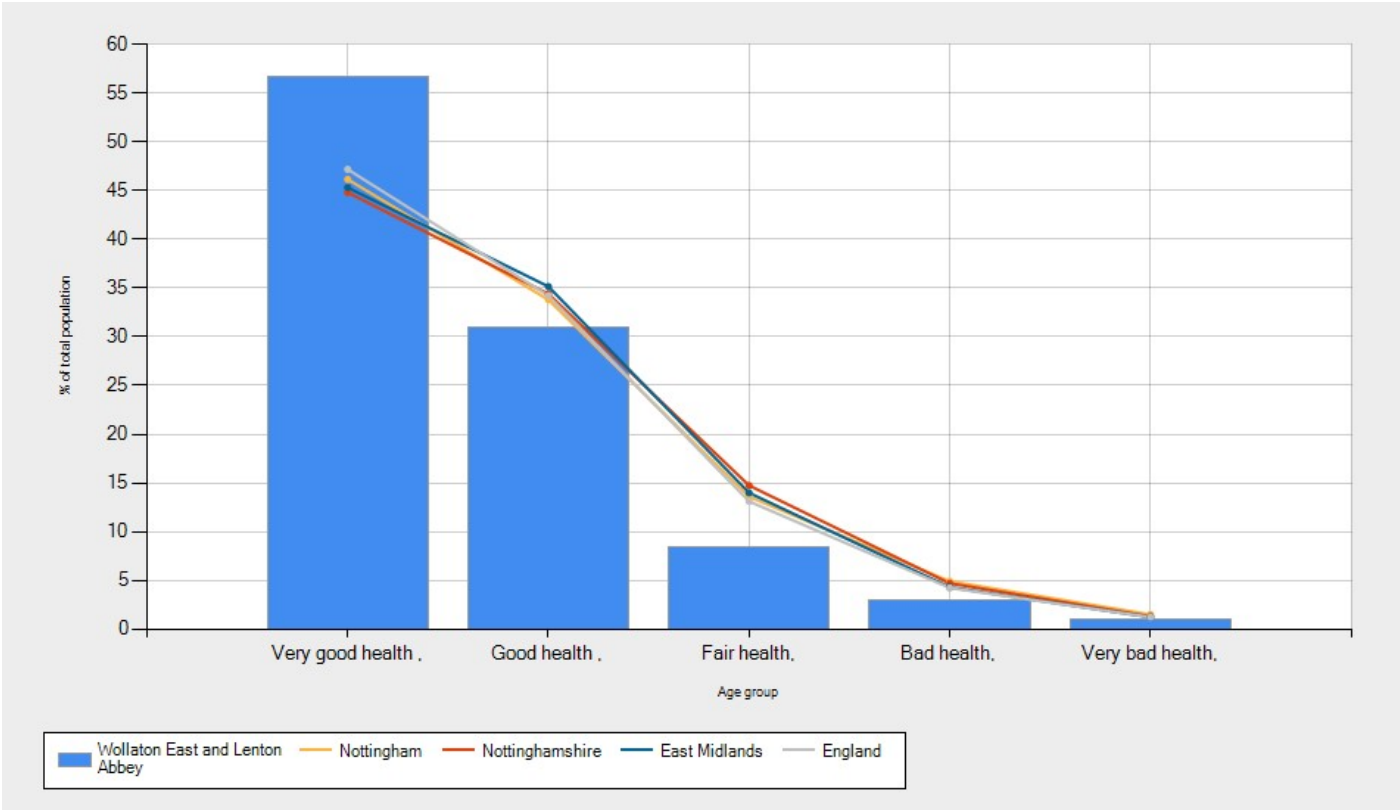
Usual residents were asked to assess their general state of health on a five point scale: very good, good, fair, bad or very bad. Data is shown as a percentage of population. (Numbers are shown in brackets).

Table: Census 2011 General health					
	Wollaton East and Lenton Abbey	Nottingham	Nottinghamshire	East Midlands	England
Very bad health	1.0 (100)	1.5	1.3	1.2	1.3
Bad health	3.0 (300)	4.9	4.7	4.3	4.3
Fair health	8.4 (840)	13.6	14.8	14.0	13.1
Good health	30.9 (3,079)	33.8	34.4	35.2	34.2
Very good health	56.6 (5,633)	46.1	44.8	45.3	47.2

Source: ONS, Census 2011

The chart below shows general health for Wollaton East and Lenton Abbey Data is shown as a percentage of total population.

Source: ONS, 2011 Census



Provision of unpaid care

A person is a provider of unpaid care if they look after or give help or support to family members, friends, neighbours or others because of long-term physical or mental ill health or disability, or problems related to old age. This does not include any activities as part of paid employment. Data shown as a percentage of the population. (Numbers are shown in brackets).

Table: Census 2011 Provision of unpaid care					
	Wollaton East and Lenton Abbey	Nottingham	Nottinghamshire	East Midlands	England
Provides no unpaid care	94.1 (9,364)	91.2	88.5	89.2	89.8
Provides 1 to 19 hours unpaid care a week	3.4 (338)	5.0	7.3	6.9	6.5
Provides 20 to 49 hours unpaid care a week	0.9 (88)	1.4	1.5	1.4	1.4
Provides 50 or more hours unpaid care a week	1.6 (162)	2.4	2.8	2.5	2.4

Source: ONS, Census 2011

[^ top ^](#)

Census Economy

## Economically Active

Economic activity relates to whether or not a person who was aged 16 to 74 was working or looking for work in the week before census. Rather than a simple indicator of whether or not someone was currently in employment, it provides a measure of whether or not a person was an active participant in the labour market. Data shown as a percentage of all 16 to 74 year olds. (Numbers are shown in brackets).

Table: Census 2011 Economically Active					
	Wollaton East and Lenton Abbey	Nottingham	Nottinghamshire	East Midlands	England
Economically active: Employee: Part-time	4.7 (410)	11.9	15.0	14.4	13.7
Economically active: Employee: Part-time (Males)	2.5 (111)	6.7	6.0	6.0	6.1
Economically active: Employee: Part-time (Females)	6.9 (299)	17.3	23.8	22.8	21.2
Economically active: Employee: Full-time	11.3 (991)	31.1	39.3	38.8	38.6
Economically active: Employee: Full-time (Males)	13.3 (587)	36.7	48.6	48.0	46.8
Economically active: Employee: Full-time (Females)	9.3 (404)	25.4	30.1	29.7	30.6
Economically active: Self-employed	2.3 (200)	5.6	8.6	8.7	9.8
Economically active: Self-employed (Males)	3.3 (146)	8.3	12.3	12.4	13.9
Economically active: Self-employed (Females)	1.2 (54)	2.9	4.9	5.0	5.7
Economically active: Unemployed	2.4 (207)	6.4	3.9	4.2	4.4
Economically active: Unemployed (Males)	2.5 (110)	7.8	4.8	5.0	5.3
Economically active: Unemployed (Females)	2.2 (97)	4.9	3.1	3.3	3.5
Economically active: Full-time student	11.7 (1,024)	6.3	2.6	3.3	3.4
Economically active: Full-time student (Males)	10.8 (477)	5.8	2.3	3.0	3.2
Economically active: Full-time student (Females)	12.6 (547)	6.9	2.9	3.6	3.7

Source: ONS, Census 2011

## Economically Inactive

Economic activity relates to whether or not a person who was aged 16 to 74 was working or looking for work in the week before census. Rather than a simple indicator of whether or not someone was currently in employment, it provides a measure of whether or not a person was an active participant in the labour market. Data shown as a percentage of all 16 to 74 year olds. (Numbers are shown in brackets).

Table: Census 2011 Economically Inactive					
	Wollaton East and Lenton Abbey	Nottingham	Nottinghamshire	East Midlands	England
Economically inactive: Retired	4.9 (428)	9.1	16.5	15.0	13.7
Economically inactive: Retired (Males)	4.1 (179)	7.8	14.4	12.9	11.8
Economically inactive: Retired (Females)	5.7 (249)	10.4	18.5	17.0	15.6
Economically inactive: Student	56.5 (4,938)	16.3	4.1	5.8	5.8
Economically inactive: Student (including full-time students) (Males)	58.7 (2,581)	16.8	4.2	5.9	6.0
Economically inactive: Student (including full-time students) (Females)	54.3 (2,357)	15.7	4.0	5.6	5.7
Economically inactive: Looking after home or family	2.2 (193)	4.7	3.8	4.0	4.4
Economically inactive: Looking after home or family (Females)	3.7 (161)	8.3	6.8	7.2	7.9
Economically inactive: Looking after home or family (Males)	0.7 (32)	1.2	0.8	0.8	0.8
Economically inactive: Long-term sick or disabled	2.6 (231)	5.7	4.4	4.1	4.1
Economically inactive: Long-term sick or disabled (Males)	2.7 (117)	6.1	4.7	4.3	4.3
Economically inactive: Long-term sick or disabled (Females)	2.6 (114)	5.2	4.1	3.9	3.8
Economically inactive: Other	1.4 (121)	3.0	1.9	1.9	2.2
Economically inactive: Other (Males)	1.4 (61)	2.9	1.9	1.9	2.0
Economically inactive: Other (Females)	1.4 (60)	3.1	1.8	2.0	2.4

Source: ONS, Census 2011

Long term unemployed

Economic activity relates to whether or not a person who was aged 16 to 74 was working or looking for work in the week before census. Rather than a simple indicator of whether or not someone was currently in employment, it provides a measure of whether or not a person was an active participant in the labour market. Data shown as a percentage of all 16 to 74 year olds. (Numbers are shown in brackets).

Table: Census 2011 Long term unemployed					
	Wollaton East and Lenton Abbey	Nottingham	Nottinghamshire	East Midlands	England
Unemployed: Never worked	0.4 (33)	1.2	0.6	0.6	0.7
Unemployed: Never worked (Males)	0.4 (16)	1.4	0.7	0.7	0.8
Unemployed: Never worked (Females)	0.4 (17)	1.1	0.5	0.5	0.6
Long-term unemployed	1.0 (86)	2.5	1.5	1.6	1.7
Long-term unemployed (Males)	1.0 (43)	2.9	1.7	1.8	2.0
Long-term unemployed (Females)	1.0 (43)	2.1	1.3	1.4	1.5

Source: ONS, Census 2011

Students

A full-time student is a person of any age who has indicated that they are a schoolchild or student in full-time education.

Schoolchildren and students in full-time education studying away from their family home are treated as usually resident at their term-time address.

Table: Census 2011 Students					
	Wollaton East and Lenton Abbey	Nottingham	Nottinghamshire	East Midlands	England
Schoolchildren and full-time students: Age 16 to 17 (% of all aged 16+)	1.2 (109)	2.3	2.7	2.7	2.7
Schoolchildren and full-time students: Age 18 and over (% of all aged 16+)	63.9 (5,821)	18.4	3.2	5.3	5.5
Full-time students: Age 18 to 74: Economically active: In employment	7.0 (N/A)	4.0	1.0	2.0	2.0
Full-time students: Age 18 to 74: Economically active: Unemployed	4.0 (N/A)	1.0	0.0	0.0	0.0
Full-time students: Age 18 to 74: Economically inactive	53.0 (N/A)	13.0	2.0	3.0	3.0

Source: ONS, Census 2011

Students

A full-time student is a person of any age who has indicated that they are a schoolchild or student in full-time education.

Schoolchildren and students in full-time education studying away from their family home are treated as usually resident at their term-time address.

Table: Census 2011 Students					
	Wollaton East and Lenton Abbey	Nottingham	Nottinghamshire	East Midlands	England
Full-time students: Age 18 to 74: Economically active: In employment	629 (N/A)	9,678	8,144	63,118	791,902
Full-time students: Age 18 to 74: Economically active: Unemployed	367 (N/A)	3,653	1,590	16,483	208,518
Full-time students: Age 18 to 74: Economically inactive	4,822 (N/A)	32,541	10,993	116,226	1,340,731

Source: ONS, Census 2011



## Hours worked

The number of hours that a person aged 16 to 74 in employment in the week before the census worked in their main job. This includes paid and unpaid overtime. Working full-time is defined as working 31 hours or more per week. This applies to the number of hours a person aged 16 to 74 in employment in the week before the census worked in their main job, and includes paid and unpaid overtime. data is shown as the percentage of all 16-74 year olds who were in employment the week before the Census. (Numbers are shown in brackets).

Table: Census 2011 Hours worked

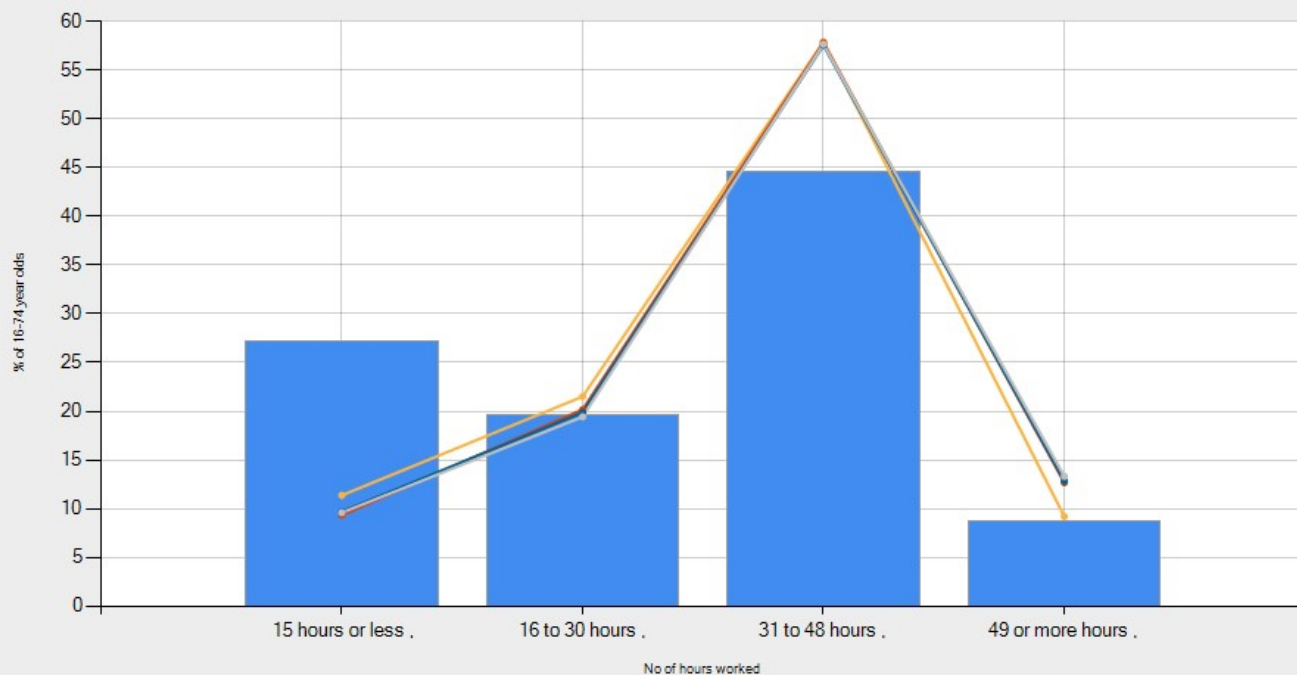
	Wollaton East and Lenton Abbey	Nottingham	Nottinghamshire	East Midlands	England
All people in work	32.4 (2,832)	61.3	69.4	69.3	69.9
Part-time: 15 hours or less worked	27.1 (609)	11.4	9.4	9.7	9.6
Part-time: 15 hours or less worked (Males)	22.5 (258)	8.1	5.2	5.6	5.8
Part-time: 15 hours or less worked (Females)	32.0 (351)	15.1	14.0	14.3	13.9
Part-time: 16 to 30 hours worked	19.6 (440)	21.5	20.2	19.9	19.4
Part-time: 16 to 30 hours worked (Males)	13.4 (153)	13.3	9.1	9.2	9.9
Part-time: 16 to 30 hours worked (Females)	26.1 (287)	30.9	32.5	31.9	30.2
Full-time: 31 to 48 hours worked	44.5 (999)	57.9	57.8	57.6	57.6
Full-time: 31 to 48 hours worked (Males)	51.1 (586)	65.4	66.6	66.0	65.1
Full-time: 31 to 48 hours worked (Females)	37.6 (413)	49.4	48.1	48.1	49.2
Full-time: 49 or more hours worked	8.7 (196)	9.2	12.7	12.9	13.3
Full-time: 49 or more hours worked (Males)	13.0 (149)	13.2	19.2	19.3	19.3
Full-time: 49 or more hours worked (Females)	4.3 (47)	4.7	5.4	5.7	6.7

Source: ONS, Census 2011

Chart: Hours worked

Data is shown as a percentage of 16 to 74 year olds.

Source: ONS, 2011 Census



## Industry

The industry in which a person aged 16 to 74 works relates to their main job, and is derived from information provided on the main activity of their employer or business. This is used to assign responses to an industry code based on the Standard Industrial Classification 2007. data is shown as the percentage of all 16-74 year olds who were in employment the week before the Census. (Numbers are shown in brackets).

Table: Census 2011 Industry					
	Wollaton East and Lenton Abbey	Nottingham	Nottinghamshire	East Midlands	England
All people in work	N/A (N/A)	N/A	N/A	N/A	N/A
All people in work	32.4 (2,832)	61.3	69.4	69.3	69.9
A Agriculture, forestry and fishing	0.3 (7)	0.2	0.8	1.2	0.8
B Mining and quarrying	0.0 ()	0.1	0.5	0.3	0.2
C Manufacturing	5.4 (121)	8.3	11.8	12.9	8.9
D Electricity, gas, steam and air conditioning supply	0.5 (12)	1.3	1.1	0.8	0.6
E Water supply; sewerage, waste management and remediation activities	0.1 (3)	0.6	0.7	0.8	0.7
F Construction	3.3 (74)	6.2	8.6	7.7	7.7
G Wholesale and retail trade; repair of motor vehicles and motor cycles	19.0 (427)	17.7	17.6	17.8	15.9
H Transport and storage	3.2 (71)	5.4	4.7	5.2	5.0
I Accommodation and food service activities	10.1 (226)	7.9	4.8	5.1	5.6
J Information and communication	3.1 (70)	3.3	2.8	2.6	4.1
K Financial and insurance activities	1.7 (38)	2.3	2.2	2.5	4.4
L Real estate activities	1.3 (28)	1.5	1.2	1.1	1.5
M Professional, scientific and technical activities	5.3 (119)	4.6	5.1	5.0	6.7
N Administrative and support service activities	3.7 (82)	6.0	3.9	4.5	4.9
O Public administration and defence; compulsory social security	3.4 (77)	4.6	6.3	5.6	5.9
P Education	19.4 (435)	10.6	10.3	9.9	9.9
Q Human health and social work activities	14.5 (325)	14.7	13.3	12.6	12.4
R, S, T, U Other	5.8 (129)	4.9	4.5	4.4	5.0

Source: ONS, Census 2011

## National Statistics Socio-economic Classification

The National Statistics Socio-economic Classification (NS-SEC) provides an indication of socio-economic position based on occupation. It is an Office for National Statistics standard classification.

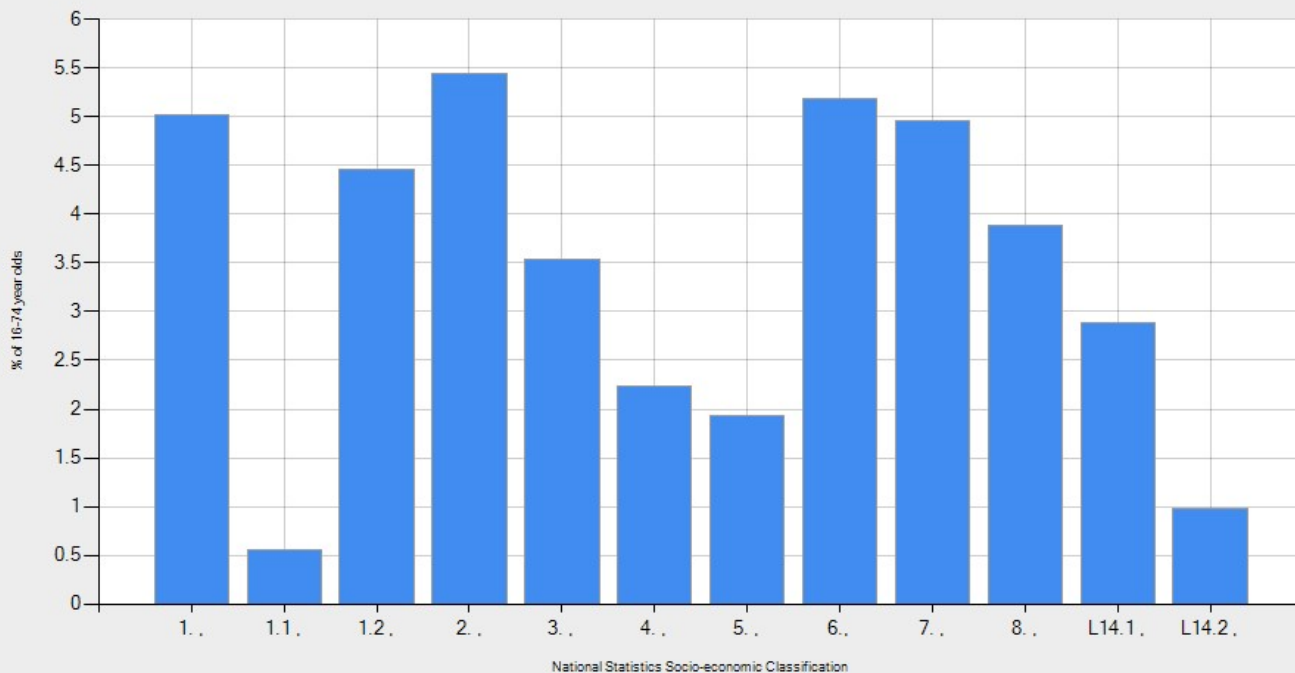
To assign a person aged 16 to 74 to an NS-SEC category their occupation title is combined with information about their employment status, whether they are employed or self-employed and whether or not they supervise other employees. Full-time students are recorded in the 'full-time students' category. Data is shown as a percentage of 16 to 74 year olds. (Numbers are shown in brackets).

Table: Census 2011 National Statistics Socio-economic Classification					
	Wollaton East and Lenton Abbey	Nottingham	Nottinghamshire	East Midlands	England
1. Higher managerial, administrative and professional occupations	5.0 (439)	6.6	9.8	9.1	10.4
1.1 Large employers and higher managerial and administrative occupations	0.6 (49)	1.2	2.5	2.4	2.4
1.2 Higher professional occupations	4.5 (390)	5.4	7.3	6.7	8.0
2. Lower managerial, administrative and professional occupations	5.4 (476)	13.7	20.4	19.4	20.9
3. Intermediate occupations	3.5 (309)	9.4	12.6	12.3	12.8
4. Small employers and own account workers	2.2 (196)	5.8	8.9	9.0	9.4
5. Lower supervisory and technical occupations	1.9 (170)	6.3	8.1	7.7	6.9
6. Semi-routine occupations	5.2 (454)	13.6	15.4	15.1	14.0
7. Routine occupations	5.0 (433)	13.8	13.8	13.6	11.0
8. Never worked and long-term unemployed	3.9 (339)	8.6	4.4	4.9	5.6
L14.1 Never worked	2.9 (253)	6.1	2.8	3.3	3.9
L14.2 Long-term unemployed	1.0 (86)	2.5	1.5	1.6	1.7
L15 Full-time students	67.8 (5,927)	22.3	6.6	8.9	9.0

Source: ONS, Census 2011

Data is shown as a percentage of 16 to 74 year olds.

Source: ONS, 2011 Census



## Qualifications

The qualifications classification enables estimates to be produced of the percentage of the population obtaining the highest level of the academic and vocational or professional qualifications. Although not a new question in 2011, some of the qualifications estimates are not directly comparable with 2001. This is due to multiple factors including changes in the level assigned to some qualifications, and the addition of a foreign qualification tick-box. Data shown as a percentage of people aged 16+. (Numbers are shown in brackets).

Table: Census 2011 Qualifications

	Wollaton East and Lenton Abbey	Nottingham	Nottinghamshire	East Midlands	England
No formal qualifications	11.2 (1,017)	25.6	25.5	24.7	22.5
Level 1 qualifications (4 GCSE's or equivalent)	5.1 (461)	12.2	14.0	13.9	13.3
Level 2 qualifications (5 GCSE's or equivalent)	8.7 (794)	12.9	15.8	15.6	15.2
Level 3 qualifications (2 or more A-levels or equivalent)	45.8 (4,174)	18.6	12.2	12.9	12.4
Level 4 qualifications and above (Bachelors degree or equivalent, and higher qualifications)	21.9 (1,997)	21.9	24.0	23.6	27.4
Apprenticeship	0.9 (79)	2.3	4.1	4.0	3.6
Other qualifications including foreign qualifications	6.5 (594)	6.5	4.4	5.3	5.7

Source: ONS, Census 2011

[^ top ^](#)